

HOMES
& GARDENS

DREAM KITCHENS

TRENDS • CASE STUDIES • EXPERT ADVICE • SHOPPING

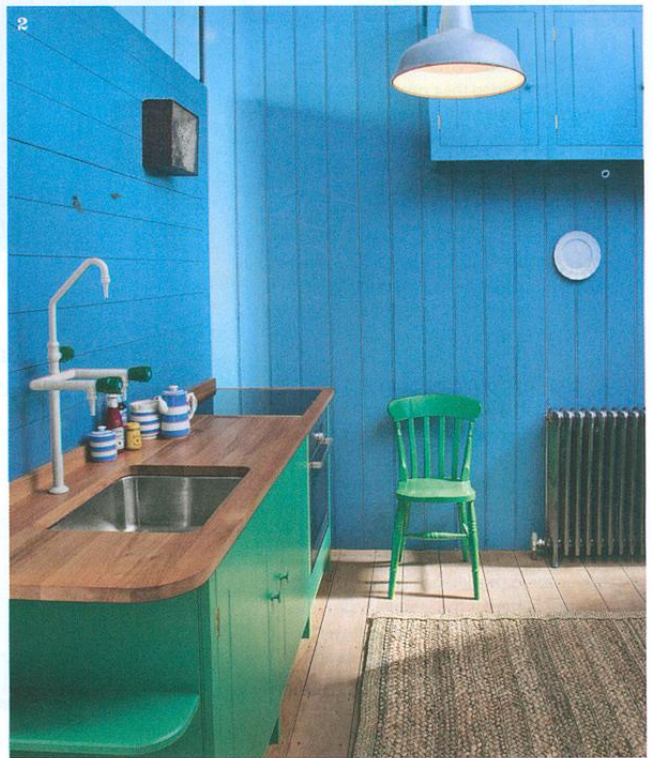


THE RIGHT TONE

Inspiring ways to create crisp details, clever contrasts and statement walls



1 | WONDER WALL Enhance a sleek, all-white kitchen by introducing a patterned wall treatment. Here, large-scale floral wallpaper and a complementary deep blue paint by Fired Earth make a lively foil to the minimal look. Gala high-gloss lacquer cabinets in Truffle Brown, £13,000 for a similar kitchen, Schüller at Rugby Fitted Kitchens, 01788 547647, rugbyfittedkitchens.co.uk.



2 | PERFECT BLEND Solid blocks of blue and green create a relaxed, vintage-farmhouse feel while painting wall cabinets the same colour as the panelling adds a modern twist. These cupboards by British Standard, 020 7870 7688, britishstandardcupboards.co.uk, are supplied ready for painting and cost around £7,000 for an average kitchen.

3 | HOT SPOTS It needn't take large areas of colour to lift a neutral scheme. Here, a polished plaster splashback, box light pendants and perky bar stools add bright pops of fuchsia pink to invigorate the space. Kitchen, from £19,000. Cue & Co, 20 7731 4728, cueandco.com.



4 | MIX AND MATCH Combining cabinets in contrasting hues and finishes was the starting point for this cleverly composed scheme. The sunny yellow of the doors has been matched to dining chairs and accessories throughout the room, creating a sense of unity and a striking modern look. A typical Metod/Tingsryd/Järsta kitchen costs £1,855. Ikea, 0845 355 1141, ikea.com/gb.

ARRESTING FINISHES

From stone to steel, distinctive materials will be a defining feature of any design

1 | ABOVE AND BEYOND

Decorative tiles reflected in steel surfaces fill this entire space with bold pattern. Designer Annabel Karim Kassar, annabelkassar.com, has combined BlattChaya tiles, blattchaya.com, with the Elam kitchen in stainless steel, from £25,000, Tisettanta, 020 7491 2044, tisettanta.ltd.uk.



2 | MIXED MEDIA

Detailed materials are ideal for adding interest to simple white units. Here, a worktop and cooker hood in veined Carrara marble and Moroccan-style tiles on the island bring a lively edge to the Sletten kitchen, from £25,000, Sola, 020 3004 0898, solakitchens.com.



3 | TOP TIMBER Wood is generally quieter, softer and more forgiving than other solid surface materials and any scratches and marks can be sanded out. This unusual and beautiful herringbone worktop, from £890sq m, is made from reclaimed Victorian pine. Kitchens from Cue & Co, 020 7731 4728, cueandco.com, start at £19,000.

4 | SOLID CHOICE Modern man-made materials allow for greater versatility in kitchen design. These units are made from Hi-Macs, a stone and acrylic composite which is ideal for creating seamless surfaces. In Alpine White, from £300m, it looks striking against the larch wood doors. Contact LG Hausys, 01892 704074, himacs.eu.