



# WHATEVER YOU WANT

Built to fit your space exactly,  
a beautifully crafted bespoke  
kitchen will last a lifetime

Words: Ysanne Brooks

# DRAWING BOARD

Jon Hart-Woods and Charlie Borthwick have designed kitchens with serious wow factor for a detached family home

Words: Hayley Gilbert

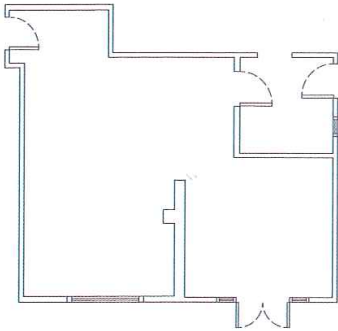
## THE CLIENTS

Phil and Michelle live in Southampton with their four children, Mia, 18, Eden, 16, Dylan, six and Bryn, four. Phil works in IT services, while Michelle works at a local pre-school. Their house is eight years old and the family has lived there for three. "It's pretty bland," admits Michelle, "but we chose it because it has space for the children."

## THE BRIEF

The couple would like help in transforming their kitchen. "It's a U-shaped space," explains Michelle, "with an arch opening into the playroom. Ideally we would like to create a large open-plan kitchen/dining room by removing the wall between the two areas and relocating the playroom to the current dining room." Their preferred style is modern and, with four children, materials that are easy to maintain are an important factor. The couple are not keen on the clinical white look and would like some splashes of colour with layers of texture. "I like wood," adds Michelle, "but I don't like the idea of oiling it regularly."

## THE SPACE

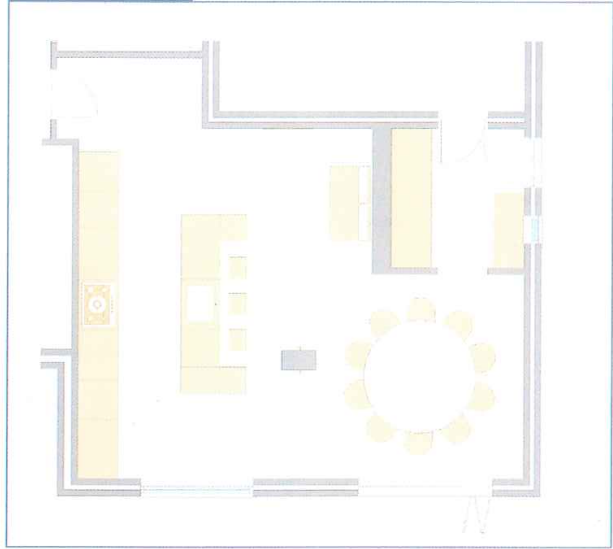


There is a pillar in the middle of the room that houses a soil stack so Phil and Michelle are considering having an island around the pillar with bar seating and potentially a small prep sink. They want to replace pretty much everything in the current kitchen, including all appliances and flooring. "At the moment we have a light-coloured floor that gets dirty quickly and is very cold, so a wooden floor would look probably better and be warmer," says Michelle. "We were also thinking about having a plinth heater beneath the units to take the chill off in the mornings."

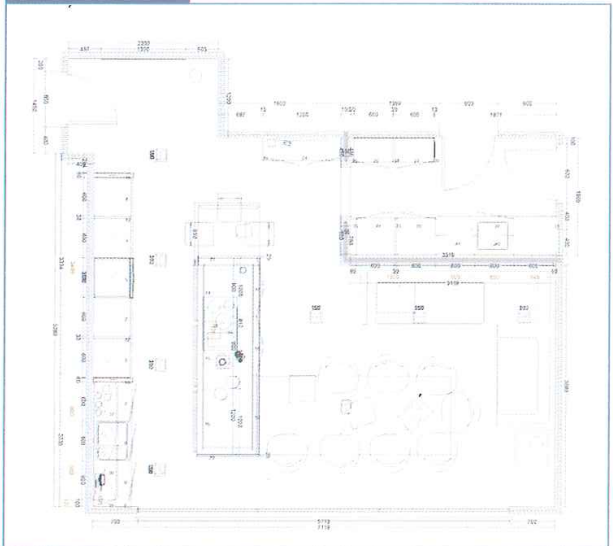
## THE BUDGET

£50,000 including installation.

## Solution one



## Solution two



## YOUR PROJECTS

Do you have a kitchen, bedroom or bathroom project in the pipeline? If you'd like to put it to our Drawing Board designers, email [sophiebaylis@taylistmedia.com](mailto:sophiebaylis@taylistmedia.com) and tell us more.

## Solution one

## The designer



Charlie Borthwick is a London-based designer specialising in kitchens, lighting and furniture. Everything at Cue & Co of London is designed and built on site to meticulous standards.



“It was certainly a challenging space, with a few structural constraints,” explains Charlie. “However, we started by removing the walls we could without incurring huge costs and were left with a lovely open space. As Michelle wanted to include wood in the scheme, we decided to juxtapose limed wood flooring with matt white kitchen cabinetry from our Waldemar range and white Corian worktops.

“The engineered oak flooring is beautiful, so we decided to bring this into the kitchen units as well. To achieve this, we have used the wood between the drawers to create a lovely contrast and a striped effect. The white gives a fresh and modern feel, while the wood creates warmth and steers it away from feeling clinical. We have aimed to carry this theme all around the room, so there is a feeling of unity and continuity.

“There are two tower blocks – one at either end of the kitchen for balance and to house the Neff appliances. There is then a run of low units between them. The Henley Cool tiled splashback from Topps Tiles brings in some colour and pattern to lift the scheme. Although the island is definitely on the large size, this is to provide more storage and also to ensure there is space on the other side of the island to accommodate some barstools.

“We were asked to try and include the soil pipe in the island, but this didn’t work in our scheme, nor did it leave

us room for a table to seat 12 people. We opted instead to make a feature of the beam and used dramatic uplights and downlights on either side of the column. There is a now a large round table with a Corian top and oak legs, which faces onto the double bi-fold doors so that guests can enjoy the views. Again, we used this as a place to add more interest and have opted for some Charles Eames-style chairs from Cult Furniture in alternating colours to complement the splashback.

“As the scheme is fairly neutral, we have added some warmth by covering the client’s old sofa in a fuchsia geometric fabric from Korla. Bringing in material also introduces another level of texture that was otherwise lacking. The budget didn’t allow us to go for a real fire, so we have specified a Dimplex electric one from e-TradeCounter instead. We like its minimalist look and also that both parts of the room benefit from it visually.

“We kept the laundry room (with Indesit appliances) as simple as possible as we wanted to use the main part of the budget on the open space. Although it protrudes into the room, we were able to use its walls to delineate the areas to some extent. The final effect is one of unity, with spaces flowing smoothly into one another.”

Cue & Co of London 020 7731 4728 or  
www.cueandco.com



### The verdict

"We love the change in the utility door to make space for a sofa as you walk in," says Phil, "and the use of a round table makes an interesting contrast shape-wise. The configuration of the space feels more usable with three defined areas, but if we pursued this option we would need to remove the soil pipe. I love that a fire has been factored into the wall and we may look into this, but with a wood-burning stove instead."

### The specifications

Cabinetry for kitchen and utility	£23,900
Appliances	£2664
Sink and tap	£545
Worktops	£3800
Flooring	£3496
Furniture and accessories	£7332
Installation, decoration and building work	£12,000

<b>Total</b>	<b>£53,737</b>
--------------	----------------

### CONTACTS

CULT FURNITURE 020 8185 6960 or  
[www.cultfurniture.com](http://www.cultfurniture.com)  
 E-TRADECOUNTER 01279 426832 or  
[www.e-tradecounter.co.uk](http://www.e-tradecounter.co.uk)  
 FASTLEC 01903 255424 or [www.fastlec.co.uk](http://www.fastlec.co.uk)  
 INDESIT 0800 092 1922 or [www.indesit.co.uk](http://www.indesit.co.uk)  
 KORLA 020 7603 7498 or [www.korlahome.com](http://www.korlahome.com)  
 REAL FLAME 020 7731 5025 or  
[www.reallflame.co.uk](http://www.reallflame.co.uk)  
 TOPPS TILES 0800 783 6262 or  
[www.toppstiles.co.uk](http://www.toppstiles.co.uk)  
 All other products available from  
 Cue & Co of London.